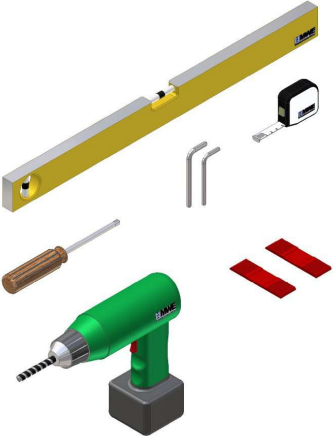
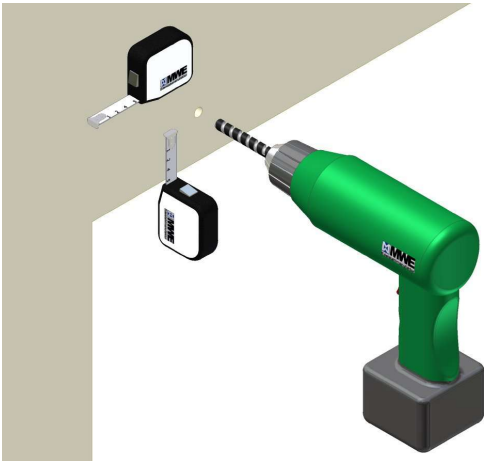
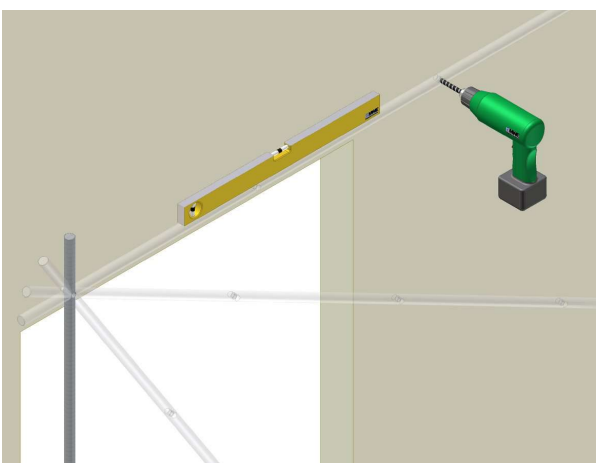


Installation instructions

System Chronos incl. MWE-Softstop (ST.1030.CH)


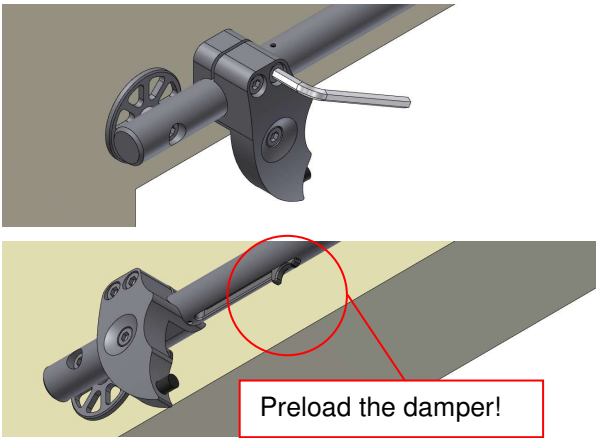
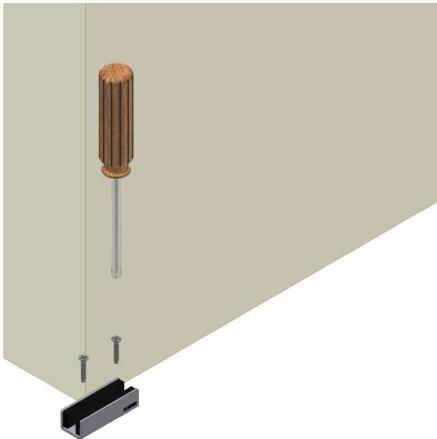
Am Steinbusch 7
D - 48351 Everswinkel
Tel.: +49(0)2582-9960- 0
Tel.: +49(0)2582-9960-128
Internet: www.mwe.de

	<h2>Tools</h2> <ul style="list-style-type: none">- water level- measuring tape- power drill- masonry drill 8mm dia./ 10mm dia.- crosstip screwdriver- Allen key set- pads <p>Please carefully read and follow the power drill safety instructions before installation.</p>
	<h2>1</h2> <h3>First wall drilling</h3> <p>Please use the water level to detect the highest point from finished floor level before making the first wall drilling. Use this point as a center line for the rail and arrange the attachment points in accordance with the drawing. The first drilling can be made now.</p>
	<h2>2</h2> <h3>Further wall drillings</h3> <p>Please loosely fix the first wall mount (see step 3). Put the rail into horizontal position and use it like a "stencil" to pre-drill further wall drillings. Drill 8 mm dia. Use a 10 mm dia. drill to re-drill the holes and make them suitable for anchors.</p>

Installation instructions

System Chronos incl. MWE-Softstop (ST.1030.CH)

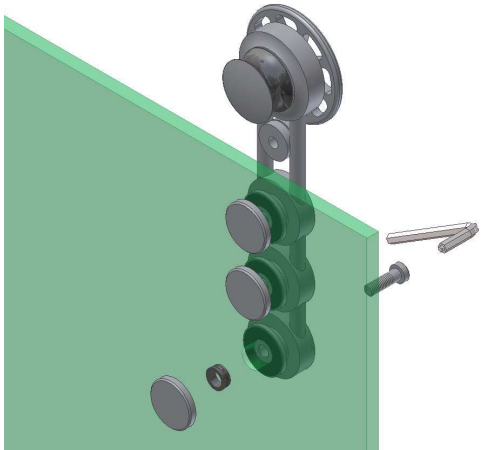
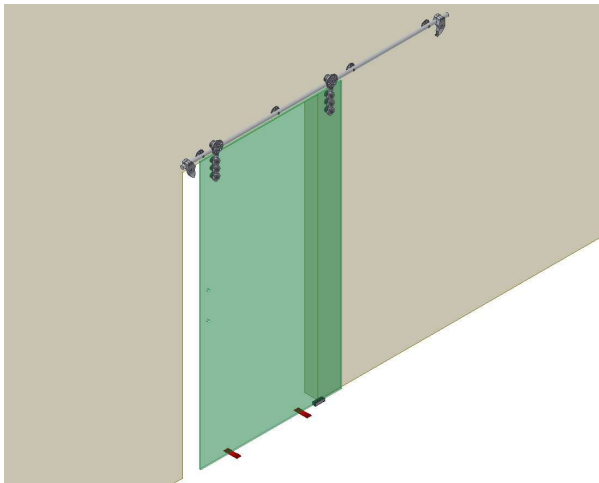
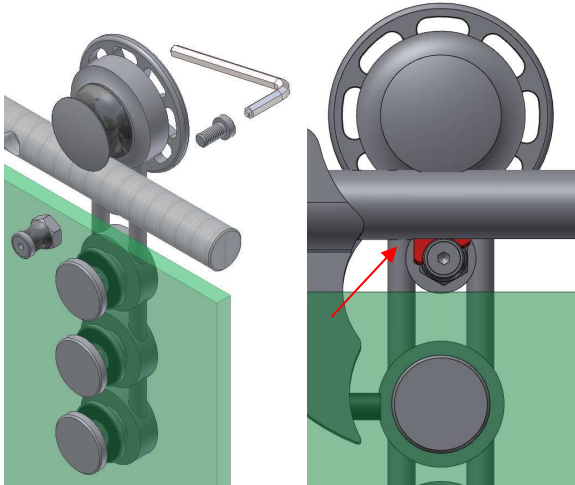
Am Steinbusch 7
D - 48351 Everswinkel
Tel.: +49(0)2582-9960- 0
Tel.: +49(0)2582-9960-128
Internet: www.mwe.de

	<p>3 Fixing the rail</p> <p>Please use enclosed mounting elements to attach the rail to the wall.</p> <p>ATTENTION Please put the door stop on the rail behind the first hole before mounting the rail. Tighten the door stop loosely.</p>
	<p>4 Adjusting the door stops</p> <p>Please adjust door stops straightly in order not to damage the door panel during the further installation.</p> <p>ATTENTION Please preload the damper before the door slides into it for the very first time. Afterwards it will be working automatically (see point 8).</p>
	<p>5 Installing the floor guide</p> <p>Please use enclosed mounting elements to fix the floor guide to the floor. The door panel must be sliding parallel to the wall at the right clearance.</p>

Installation instructions

System Chronos incl. MWE-Softstop (ST.1030.CH)

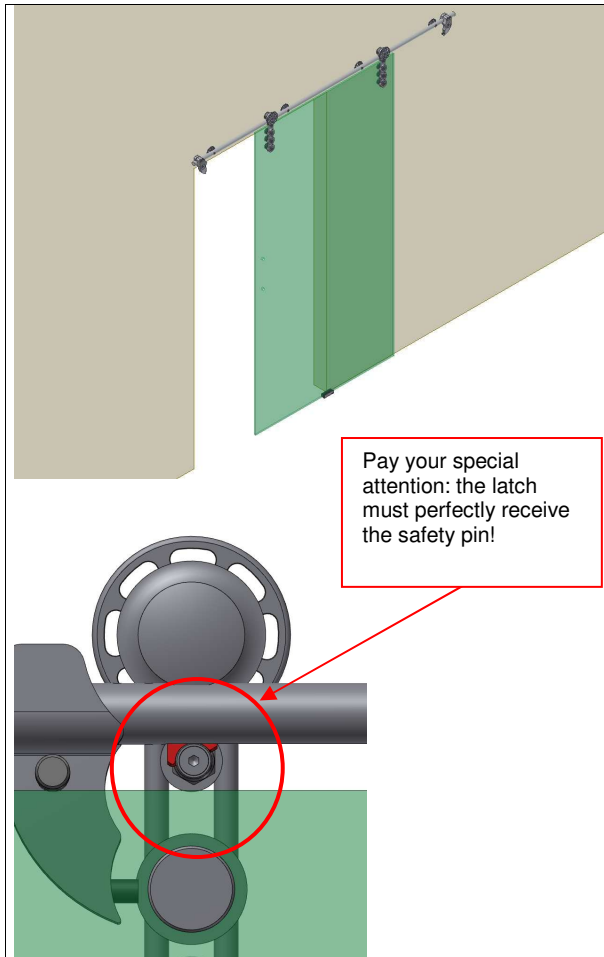
Am Steinbusch 7
D - 48351 Everswinkel
Tel.: +49(0)2582-9960- 0
Tel.: +49(0)2582-9960-128
Internet: www.mwe.de

	<p>6 Fixing the rollers</p> <p>Please put the door panel on an assembling trestle (fitting side up). Disassemble the safety pin and the glass attachments. Put the washers on the glass holes. Then put the roller holders on it and fix them hand-tight at the bottom side by using attachments. Do not lose the plastic covers for the glass attachments!</p>
	<p>7 Hinging the door panel</p> <p>Please hinge the door panel at the rail. Place the pads under the door panel for safety reasons and in order to adjust the clearance between door panel and the finished floor (7 mm). Please mind the preassembled floor guide. Remove the pads once finished.</p>
	<p>8 Installing the safety pin</p> <p>Please push the door panel under the Soft-Stop latch (red colored) to adjust the safety pin. Adjust the safety pin by using an eccentric so that it perfectly fits the latch.</p> <p>Functional check The damper should go back into loaded position when you pull the door out of the end position.</p>

Installation instructions

System Chronos incl. MWE-Softstop (ST.1030.CH)

Am Steinbusch 7
D - 48351 Everswinkel
Tel.: +49(0)2582-9960- 0
Tel.: +49(0)2582-9960-128
Internet: www.mwe.de



Pay your special attention: the latch must perfectly receive the safety pin!

9

Control the sliding door

Please check proper function of the sliding door and adjust the door stops at the ends of the rail. Tighten the stops definitely. Now you can install the door pull or flush pulls.

10

Tightening the bolts

Once the installation is finished, please make sure to tighten every single bolt once again!

